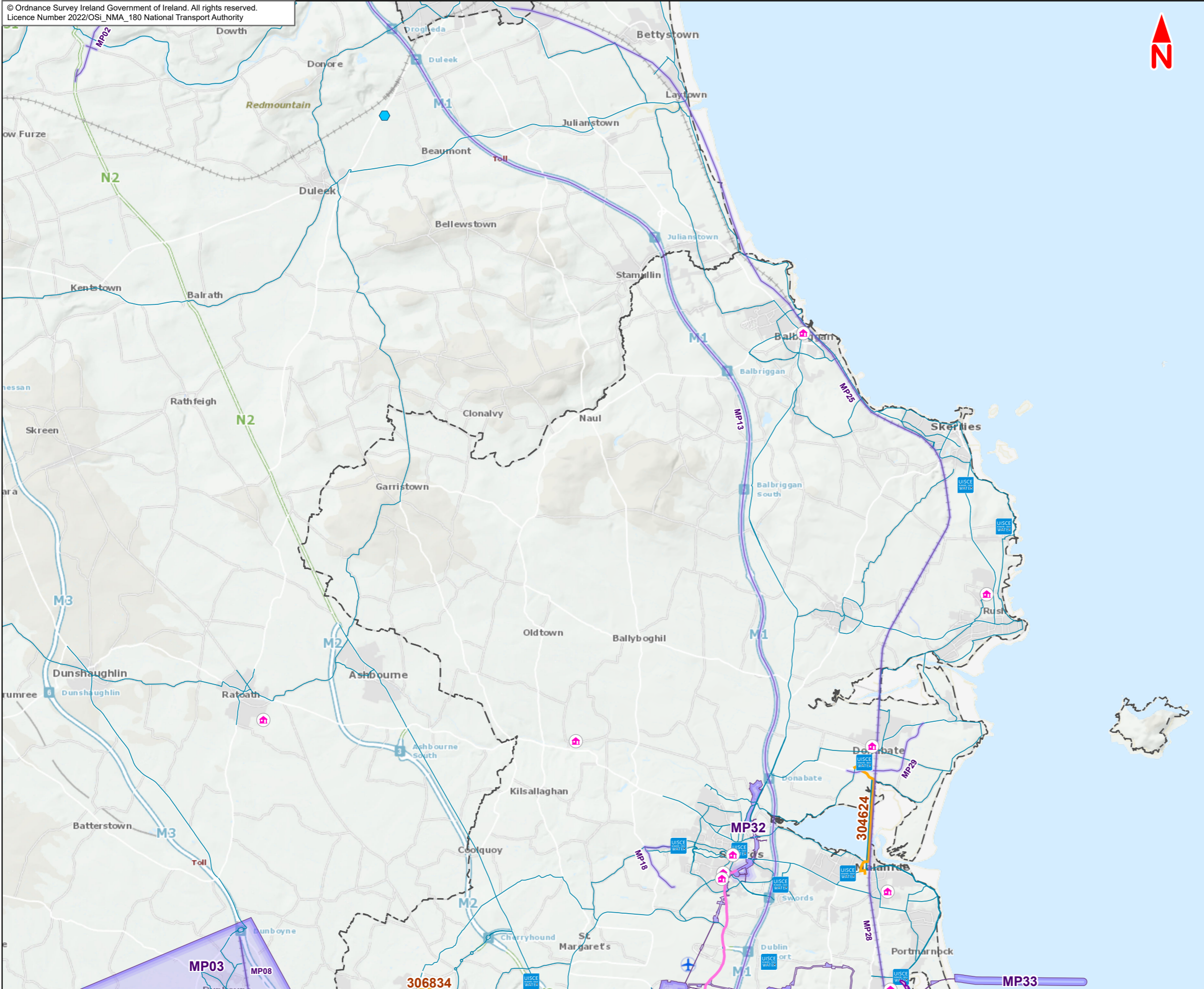


The background of the page is a vibrant yellow. Overlaid on this are several abstract, organic shapes in shades of blue and green. These shapes are interconnected and feature white circular cutouts of varying sizes. The overall aesthetic is modern and graphic.

21.1 Cumulative Effects: Shortlisted Strategic Development and Major Projects



- Legend :**
- Lucan to City Centre Core Bus Corridor Scheme
 - Strategic Housing Development (SHD)
 - River Poddle Flood Alleviation Scheme site (SID)
 - Irish Water Projects
 - Greater Dublin Area (GDA) Cycle Network Plan
 - Strategic Infrastructure Development (SID) - Linear
 - Strategic Infrastructure Development (SID)
 - Other major project (linear)
 - Other major project
 - Amenity development
 - Local authority boundary

This drawing is not to be used in whole or in part other than for the intended purpose and project as defined on this drawing. Contains Irish Public Sector Data licensed under a Creative Commons Attribution 4.0 International (CC BY 4.0) license.



Disclaimer
a. © National Transport Authority (NTA) 2022. This drawing is confidential and the copyright in it is owned by NTA. This drawing must not be either loaned, copied or otherwise reproduced in whole or in part or used for any purpose without the prior permission of NTA.
b. This drawing is to be used for the design element identified in the titleblock. Other information shown is to be considered indicative only. The drawing is to be read in conjunction with all other relevant design drawings.
c. O.S. data used for plans are printed under © Ordnance Survey Ireland Government of Ireland. All rights reserved. Licence Number 2022/OSI_NMA_180 National Transport Authority. All elevations are in metres and relate to OSI Geoid Model (OSGM15) Mean Head. All Co-ordinates are in Irish Transverse Mercator Grid (ITM) as defined by OSI active local GPS station.

d. Information concerning the position of apparatus shown on this drawing is based on drawings supplied by the utility owners and/or the utility works contractor, whilst every care has been taken in the preparation of this drawing, positions should be taken as approximate and are intended for general guidance only and no representation is made by the NTA as to the accuracy, completeness, sufficiency or otherwise of this drawing and the position of the apparatus. The information contained herein does not purport to be comprehensive or final as the apparatus is subject to being altered and/or superceded. Recipients should not rely on this information. Any liabilities are hereby expressly disclaimed.

e. The information contained herein has been provided by the NTA but does not purport to be comprehensive or final. Recipients should not rely on the information. Neither the NTA nor any of its directors, officers, employees, agents, stakeholders or advisers make any representation or warranty as to, or accept any liability or responsibility in relation to, the adequacy, accuracy, reasonableness or completeness of the information provided as part of this document or any matter on which the information is based (including but not limited to loss or damage arising as a result of reliance by recipients on the information or any part of it. Any liabilities are hereby expressly disclaimed.



Rev	Date	Drn	Chk'd	App'd	Description
M01	Oct 2022	LF	PW	DK	ISSUE FOR PHASE 4 : PLANNING

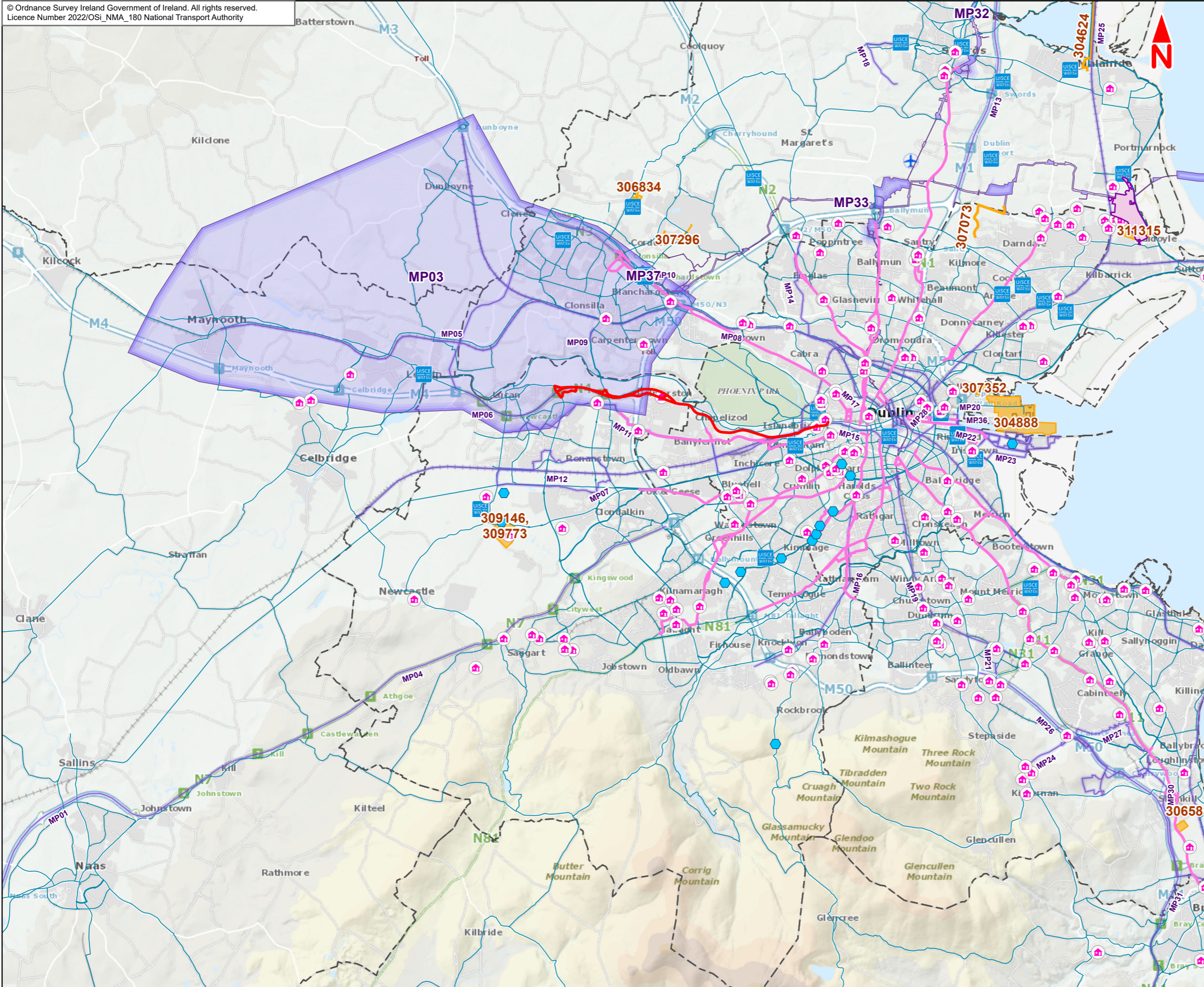
Client: **NTA**
Udarás Náisiúnta Iompair
National Transport Authority

Consultant: **JACOBS ARUP SYSTRA**

Date: 03/10/2022 | Scale @ A3: 1:125,000
Project Code: BCIDE | Originator Code: JAC

Drawn: LF | Checked: PW | Approved: DK
QMS Code: _____

Programme Title: BUSCONNECTS DUBLIN CORE BUS CORRIDORS INFRASTRUCTURE WORKS			
Drawing Title: Lucan to City Centre Core Bus Corridor Scheme Figure 21.1 Cumulative Effects: Shortlisted Strategic Development and Major Projects			
Drawing File Name: BCIDE-JAC-ENV_BC-0006_XX_00-DR-GG-0101	Sheet Number: 1 of 3	Status: A	Rev: M01



- Legend :**
- Lucan to City Centre Core Bus Corridor Scheme
 - Other Core Bus Corridor: indicative route
 - Strategic Housing Development (SHD)
 - River Poddle Flood Alleviation Scheme site (SID)
 - Irish Water Projects
 - Greater Dublin Area (GDA) Cycle Network Plan
 - Strategic Infrastructure Development (SID) - Linear
 - Strategic Infrastructure Development (SID)
 - Other major project (linear)
 - Other major project
 - Amenity development
 - Local authority boundary

This drawing is not to be used in whole or in part other than for the intended purpose and project as defined on this drawing. Contains Irish Public Sector Data licensed under a Creative Commons Attribution 4.0 International (CC BY 4.0) license.



Disclaimer
a. © National Transport Authority (NTA) 2022. This drawing is confidential and the copyright in it is owned by NTA. This drawing must not be either loaned, copied or otherwise reproduced in whole or in part or used for any purpose without the prior permission of NTA.
b. This drawing is to be used for the design element identified in the titleblock. Other information shown is to be considered indicative only. The drawing is to be read in conjunction with all other relevant design drawings.
c. O.S. data used for plans are printed under © Ordnance Survey Ireland Government of Ireland. All rights reserved. Licence Number 2022/OSI_NMA_180 National Transport Authority. All elevations are in metres and relate to OSI Geoid Model (OSGM15) Mean Head. All Co-ordinates are in Irish

Transverse Mercator Grid (ITM) as defined by OSI active local GPS station.
d. Information concerning the position of apparatus shown on this drawing is based on drawings supplied by the utility owners and/or the utility works contractor, whilst every care has been taken in the preparation of this drawing, positions should be taken as approximate and are intended for general guidance only and no representation is made by the NTA as to the accuracy, completeness, sufficiency or otherwise of this drawing and the position of the apparatus. The information contained herein does not purport to be comprehensive or final. Recipients should not rely on this information. Any liabilities are hereby expressly disclaimed.

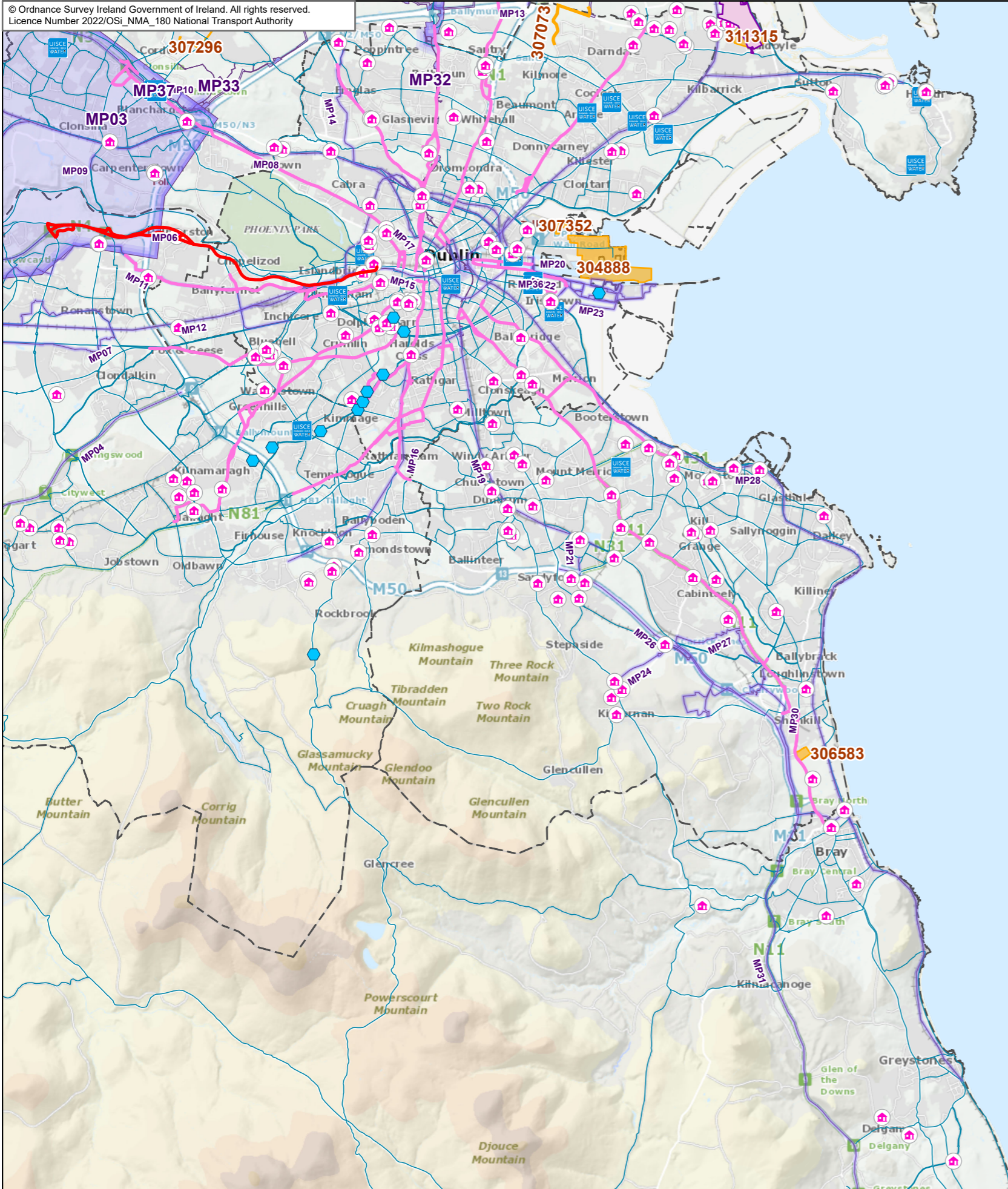
e. The information contained herein has been provided by the NTA but does not purport to be comprehensive or final. Recipients should not rely on the information. Neither the NTA nor any of its directors, officers, employees, agents, stakeholders or advisers make any representation or warranty as to, or accept any liability or responsibility in relation to, the adequacy, accuracy, reasonableness or completeness of the information provided as part of this document or any matter on which the information is based (including but not limited to loss or damage arising as a result of reliance by recipients on the information or any part of it. Any liabilities are hereby expressly disclaimed.



Rev	Date	Drn	Chk'd	App'd	Description
M01	Oct 2022	LF	PW	DK	ISSUE FOR PHASE 4 : PLANNING

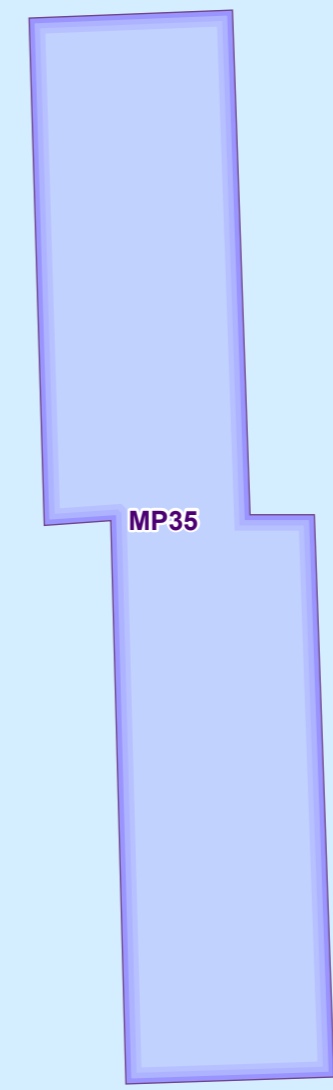
Client NTA Udarás Náisiúnta Iompair National Transport Authority		Consultant JACOBS ARUP SYSTRA		
Date 03/10/2022	Scale @ A3 1:125,000	Drawn LF	Checked PW	Approved DK
Project Code BCIDE	Originator Code JAC	QMS Code		

Programme Title BUSCONNECTS DUBLIN CORE BUS CORRIDORS INFRASTRUCTURE WORKS				
Drawing Title Lucan to City Centre Core Bus Corridor Scheme Figure 21.1 Cumulative Effects: Shortlisted Strategic Development and Major Projects				
Drawing File Name BCIDE-JAC-ENV_BC-0006_XX_00-DR-GG-0102	Sheet Number 2 of 3	Status A	Rev M01	

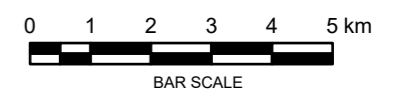


Legend :

- Lucan to City Centre Core Bus Corridor Scheme
- Other Core Bus Corridor: indicative route
- Strategic Housing Development (SHD)
- River Poddle Flood Alleviation Scheme site (SID)
- Irish Water Projects
- Greater Dublin Area (GDA) Cycle Network Plan
- Strategic Infrastructure Development (SID) - Linear
- Strategic Infrastructure Development (SID)
- Other major project (linear)
- Other major project
- Amenity development
- Local authority boundary



This drawing is not to be used in whole or in part other than for the intended purpose and project as defined on this drawing. Contains Irish Public Sector Data licensed under a Creative Commons Attribution 4.0 International (CC BY 4.0) license.



Disclaimer
a. © National Transport Authority (NTA) 2022. This drawing is confidential and the copyright in it is owned by NTA. This drawing must not be either loaned, copied or otherwise reproduced in whole or in part or used for any purpose without the prior permission of NTA.
b. This drawing is to be used for the design element identified in the titleblock. Other information shown is to be considered indicative only. The drawing is to be read in conjunction with all other relevant design drawings.
c. O.S. data used for plans are printed under © Ordnance Survey Ireland Government of Ireland. All rights reserved. Licence Number 2022/OSI_NMA_180 National Transport Authority. All elevations are in metres and relate to OSi Geoid Model (OSGM15) Mean Head. All Co-ordinates are in Irish

Transverse Mercator Grid (ITM) as defined by OSi active local GPS station.
d. Information concerning the position of apparatus shown on this drawing is based on drawings supplied by the utility owners and/or the utility works contractor, whilst every care has been taken in the preparation of this drawing, positions should be taken as approximate and are intended for general guidance only and no representation is made by the NTA as to the accuracy, completeness, sufficiency or otherwise of this drawing and the position of the apparatus. The information contained herein does not purport to be comprehensive or final as the apparatus is subject to being altered and/or superceded. Recipients should not rely on this information. Any liabilities are hereby expressly disclaimed.

e. The information contained herein has been provided by the NTA but does not purport to be comprehensive or final. Recipients should not rely on the information. Neither the NTA nor any of its directors, officers, employees, agents, stakeholders or advisers make any representation or warranty as to, or accept any liability or responsibility in relation to, the adequacy, accuracy, reasonableness or completeness of the information provided as part of this document or any matter on which the information is based (including but not limited to loss or damage arising as a result of reliance by recipients on the information or any part of it. Any liabilities are hereby expressly disclaimed.



Rev	Date	Drn	Chk'd	App'd	Description
M01	Oct 2022	LF	PW	DK	ISSUE FOR PHASE 4 : PLANNING

Client
NTA
Udarás Náisiúnta Iompair
National Transport Authority

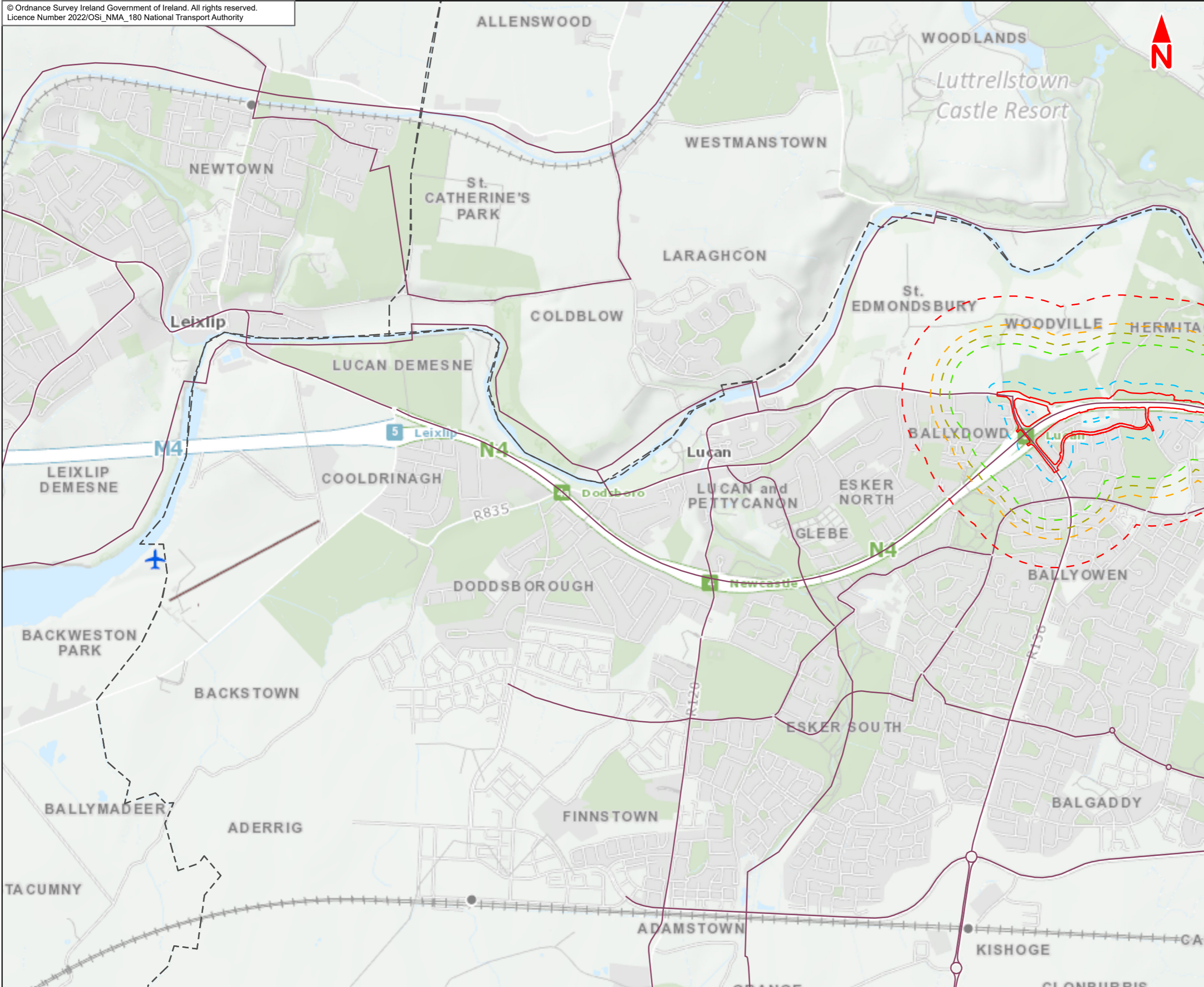
Consultant
JACOBS
ARUP SYSTRA

Programme Title BUSCONNECTS DUBLIN CORE BUS CORRIDORS INFRASTRUCTURE WORKS				
Drawing Title Lucan to City Centre Core Bus Corridor Scheme Figure 21.1 Cumulative Effects: Shortlisted Strategic Development and Major Projects				
Date 03/10/2022	Scale @ A3 1:125,000	Drawn LF	Checked PW	Approved DK
Project Code BCIDE	Originator Code JAC	QMS Code		
Drawing File Name BCIDE-JAC-ENV_BC-0013_XX_00-DR-GG-0103	Sheet Number 3 of 3	Status A	Rev M01	

21.2

Cumulative Effects:
Shortlisted Planning
Applications and other
Projects within 500m





- Legend :**
- Lucan to City Centre Core Bus Corridor Scheme
 - 500m buffer
 - 350m buffer
 - 300m buffer
 - 250m buffer
 - 50m buffer
 - Artane Lead Service Replacement Works (IW19)
 - 🏠 Strategic Housing Development (SHD) selection
 - Greater Dublin Area (GDA) Cycle Network Plan (MP 34)
 - Local authority boundary
 - Scheme A2 Screened Application

This drawing is not to be used in whole or in part other than for the intended purpose and project as defined on this drawing. Contains Irish Public Sector Data licensed under a Creative Commons Attribution 4.0 International (CC BY 4.0) license.



Disclaimer
a. © National Transport Authority (NTA) 2022. This drawing is confidential and the copyright in it is owned by NTA. This drawing may not be copied, reproduced, stored in a retrieval system, or otherwise used in any way without the prior written permission of NTA.
b. This drawing is to be used for the design element identified in the title block. Other information shown is to be considered indicative only. The drawing is to be read in conjunction with all other relevant design drawings.
c. O.S. data used for plans are printed under © Ordnance Survey Ireland Government of Ireland. All rights reserved. Licence Number 2022/OSI_NMA_180 National Transport Authority. All elevations are in metres and relate to OSI Geoid Model (OSGM15) Mean Head. All Co-ordinates are in Irish

Transverse Mercator Grid (ITM) as defined by OSI active local GPS station.
d. Information concerning the position of apparatus shown on this drawing is based on drawings supplied by the utility owners and/or the utility works contractor, whilst every care has been taken in the preparation of this drawing, positions should be taken as approximate and are intended for general guidance only and no representation is made by the NTA as to the accuracy, completeness, sufficiency or otherwise of this drawing and the position of the apparatus. The information contained herein does not purport to be comprehensive or final as the apparatus is subject to being altered and/or superseded. Recipients should not rely on this information. Any liabilities are hereby expressly disclaimed.

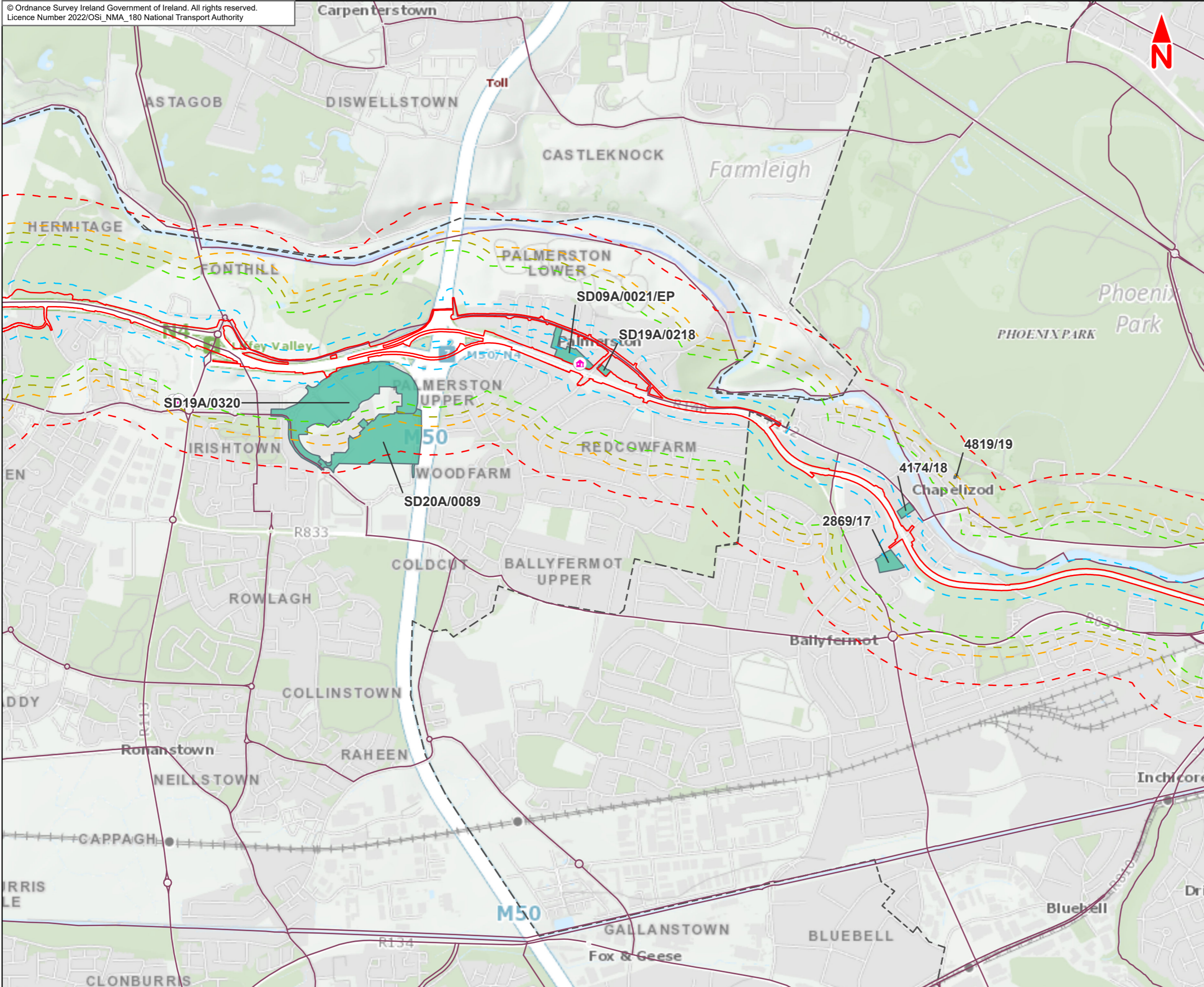
e. The information contained herein has been provided by the NTA but does not purport to be comprehensive or final. Recipients should not rely on the information. Neither the NTA nor any of its directors, officers, employees, agents, stakeholders or advisers make any representation or warranty as to, or accept any liability or responsibility in relation to, the adequacy, accuracy, reasonableness or completeness of the information provided as part of this document or any matter on which the information is based (including but not limited to loss or damage arising as a result of reliance by recipients on the information or any part of it. Any liabilities are hereby expressly disclaimed.



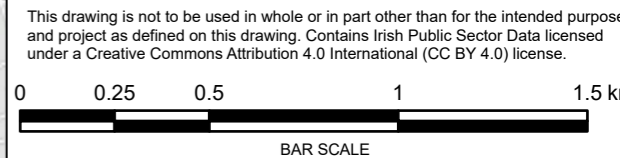
Rev	Date	Drn	Chk'd	App'd	Description
M01	Oct 2022	KJ	PW	DK	ISSUE FOR PHASE 4 : PLANNING

Client NTA Udarás Náisiúnta Iompair National Transport Authority		Consultant JACOBS ARUP SYSTRA		
Date 03/10/2022	Scale @ A3 1:20,000	Drawn KJ	Checked PW	Approved DK
Project Code BCIDE	Originator Code JAC	QMS Code		

Programme Title BUSCONNECTS DUBLIN CORE BUS CORRIDORS INFRASTRUCTURE WORKS				
Drawing Title Lucan to City Centre Core Bus Corridor Scheme Figure 21.2 Cumulative Effects: Shortlisted Planning Applications and other Projects within 500m				
Drawing File Name BCIDE-JAC-ENV BC-0006_XX_00-DR-GG-0201	Sheet Number 1 of 3	Status A	Rev M01	



- Legend :**
- Lucan to City Centre Core Bus Corridor Scheme
 - 500m buffer
 - 350m buffer
 - 300m buffer
 - 250m buffer
 - 50m buffer
 - Artane Lead Service Replacement Works (IW19)
 - Ⓜ Strategic Housing Development (SHD) selection
 - Greater Dublin Area (GDA) Cycle Network Plan (MP 34)
 - Local authority boundary
 - Scheme A2 Screened Application



Disclaimer
 a. © National Transport Authority (NTA) 2022. This drawing is confidential and the copyright in it is owned by NTA. This drawing must not be either loaned, copied or otherwise reproduced in whole or in part or used for any purpose without the prior permission of NTA.
 b. This drawing is to be used for the design element identified in the titleblock. Other information shown is to be considered indicative only. The drawing is to be read in conjunction with all other relevant design drawings.
 c. O.S. data used for plans are printed under © Ordnance Survey Ireland Government of Ireland. All rights reserved. Licence Number 2022/OSI_NMA_180 National Transport Authority. All elevations are in metres and relate to OSI Geoid Model (OSGM15) Malin Head. All Co-ordinates are in Irish

Transverse Mercator Grid (ITM) as defined by OSI active local GPS station.
 d. Information concerning the position of apparatus shown on this drawing is based on drawings supplied by the utility owners and/or the utility works contractor, whilst every care has been taken in the preparation of this drawing, positions should be taken as approximate and are intended for general guidance only and no representation is made by the NTA as to the accuracy, completeness, sufficiency or otherwise of this drawing and the position of the apparatus. The information contained herein does not purport to be comprehensive or final as the apparatus is subject to being altered and/or superceded. Recipients should not rely on this information. Any liabilities are hereby expressly disclaimed.

e. The information contained herein has been provided by the NTA but does not purport to be comprehensive or final. Recipients should not rely on the information. Neither the NTA nor any of its directors, officers, employees, agents, stakeholders or advisers make any representation or warranty as to, or accept any liability or responsibility in relation to, the adequacy, accuracy, reasonableness or completeness of the information provided as part of this document or any matter on which the information is based (including but not limited to loss or damage arising as a result of reliance by recipients on the information or any part of it. Any liabilities are hereby expressly disclaimed.



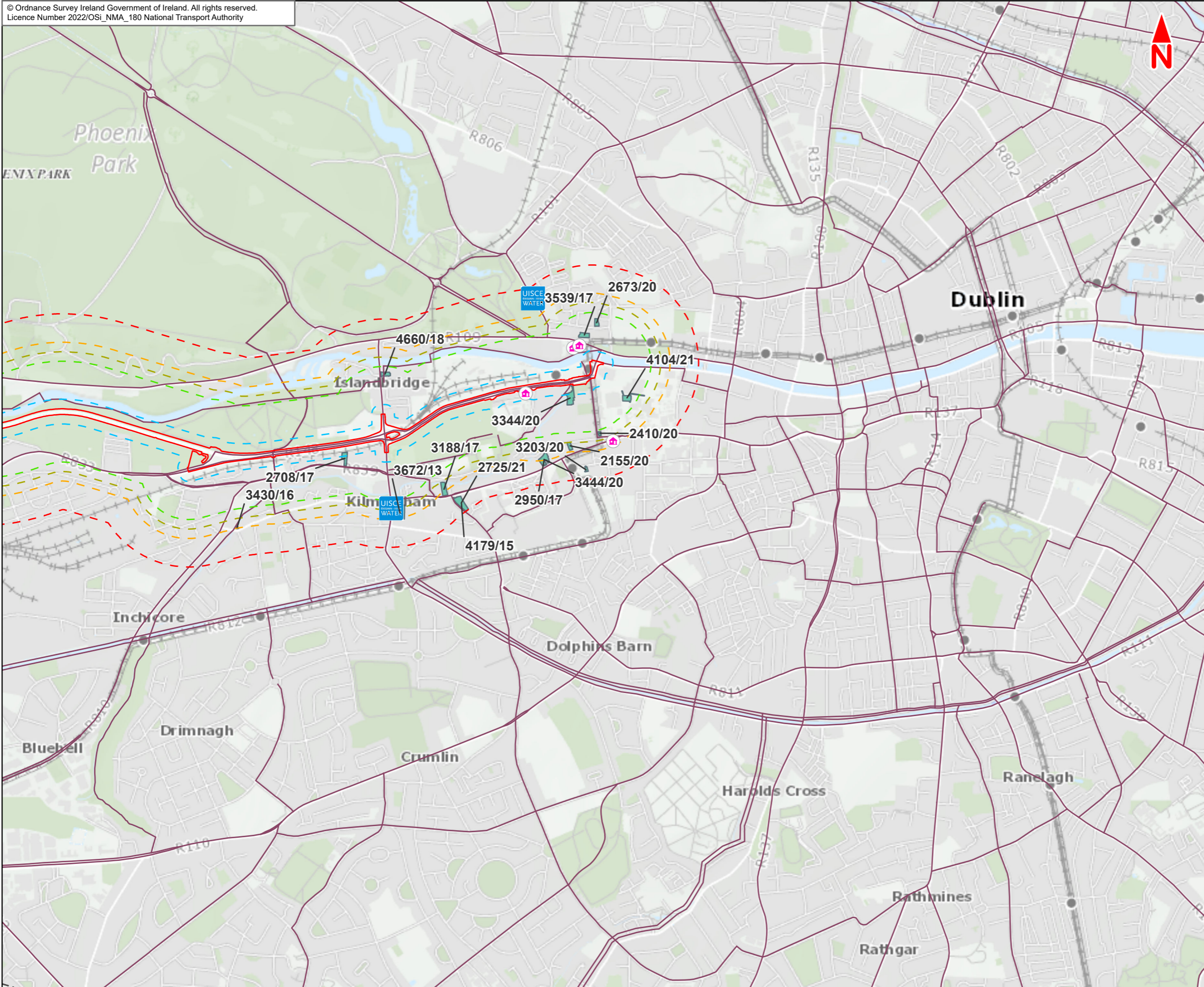
Rev	Date	Drn	Chk'd	App'd	Description
M01	Oct 2022	KJ	PW	DK	ISSUE FOR PHASE 4 : PLANNING

Client
NTA
 Udarás Náisiúnta Iompair
 National Transport Authority

Consultant
JACOBS
ARUP SYSTRA

Programme Title BUSCONNECTS DUBLIN CORE BUS CORRIDORS INFRASTRUCTURE WORKS				
Drawing Title Lucan to City Centre Core Bus Corridor Scheme				
Cumulative Effects: Shortlisted Planning Applications and other Projects within 500m				
Drawing File Name BCIDE-JAC-ENV BC-0006_XX_00-DR-GG-0202	Sheet Number 2 of 3	Status A	Rev M01	

Date 03/10/2022	Scale @ A3 1:20,000	Drawn KJ	Checked PW	Approved DK
Project Code BCIDE	Originator Code JAC	QMS Code		



- Legend :**
- Lucan to City Centre Core Bus Corridor Scheme
 - 500m buffer
 - 350m buffer
 - 300m buffer
 - 250m buffer
 - 50m buffer
 - UISCE WATER Artane Lead Service Replacement Works (IW19)
 - 🏠 Strategic Housing Development (SHD) selection
 - Greater Dublin Area (GDA) Cycle Network Plan (MP 34)
 - Local authority boundary
 - Scheme A2 Screened Application

This drawing is not to be used in whole or in part other than for the intended purpose and project as defined on this drawing. Contains Irish Public Sector Data licensed under a Creative Commons Attribution 4.0 International (CC BY 4.0) license.



Disclaimer
a. © National Transport Authority (NTA) 2022. This drawing is confidential and the copyright in it is owned by NTA. This drawing must not be either loaned, copied or otherwise reproduced in whole or in part or used for any purpose without the prior permission of NTA.
b. This drawing is to be used for the design element identified in the titleblock. Other information shown is to be considered indicative only. The drawing is to be read in conjunction with all other relevant design drawings.
c. O.S. data used for plans are printed under © Ordnance Survey Ireland Government of Ireland. All rights reserved. Licence Number 2022/OSI_NMA_180 National Transport Authority. All elevations are in metres and relate to OSi Geoid Model (OSGM15) Mean Head. All Co-ordinates are in Irish Transverse Mercator Grid (ITM) as defined by OSi active local GPS station.

d. Information concerning the position of apparatus shown on this drawing is based on drawings supplied by the utility owners and/or the utility works contractor, whilst every care has been taken in the preparation of this drawing, positions should be taken as approximate and are intended for general guidance only and no representation is made by the NTA as to the accuracy, completeness, sufficiency or otherwise of this drawing and the position of the apparatus. The information contained herein does not purport to be comprehensive or final as the apparatus is subject to being altered and/or superseded. Recipients should not rely on this information. Any liabilities are hereby expressly disclaimed.

e. The information contained herein has been provided by the NTA but does not purport to be comprehensive or final. Recipients should not rely on the information. Neither the NTA nor any of its directors, officers, employees, agents, stakeholders or advisers make any representation or warranty as to, or accept any liability or responsibility in relation to, the adequacy, accuracy, reasonableness or completeness of the information provided as part of this document or any matter on which the information is based (including but not limited to loss or damage arising as a result of reliance by recipients on the information or any part of it. Any liabilities are hereby expressly disclaimed.



Rev	Date	Drn	Chk'd	App'd	Description
M01	Oct 2022	KJ	PW	DK	ISSUE FOR PHASE 4 : PLANNING

Client
NTA
Udarás Náisiúnta Iompair
National Transport Authority

Consultant
JACOBS ARUP SYSTRA

Programme Title BUSCONNECTS DUBLIN CORE BUS CORRIDORS INFRASTRUCTURE WORKS				
Drawing Title Lucan to City Centre Core Bus Corridor Scheme				
Cumulative Effects: Shortlisted Planning Applications and other Projects within 500m				
Drawing File Name BCIDE-JAC-ENV BC-0006_XX_00-DR-GG-0203	Sheet Number 3 of 3	Status A	Rev M01	

Date 03/10/2022	Scale @ A3 1:20,000	Drawn KJ	Checked PW	Approved DK
Project Code BCIDE	Originator Code JAC	QMS Code		



Údarás Náisiúnta Iompair
National Transport Authority

National Transport Authority
Dún Scéine
Harcourt Lane
Dublin 2
D02 WT20



Project Ireland 2040
Building Ireland's Future